

3600 Series Heavy-Duty Slide Options

- Load ratings up to 273 lbs.
- .75" side space
- Hold-in detent



Model 3600

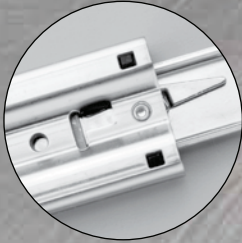


3600

3601

3607

3657



Lever Disconnect
Models
3607 & 3657

3600 Series Heavy-Duty Slide Options

The 3600 series offers four heavy-duty choices with varying features designed to accommodate applications found in utility and emergency vehicles, machinery and manufacturing equipment, industrial workstations, and more.

3600 – Non-Disconnect

- Load capacity up to 273 lbs. per pair
- Full extension
- Side space dimension .75"
- Hold-in detent
- No disconnect method

3601 – Over Travel + Non-Disconnect

- Load capacity up to 255 lbs. per pair
- 1" over travel
- Side space dimension .75"
- Hold-in detent
- No disconnect method

3607 – Lock-Out + Lever Disconnect

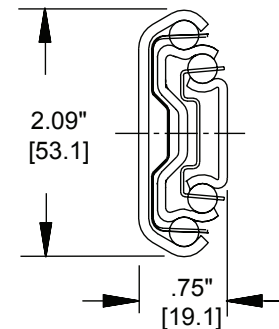
- Load capacity up to 273 lbs. per pair
- Full extension
- Side space dimension .75"
- Hold-in detent
- Lock-out holds pullouts in a safe and stable position for extended access.
- Lever disconnect

3657 – Lever Disconnect

- Load capacity up to 273 lbs. per pair
- Full extension
- Side space dimension .75"
- Hold-in detent
- Lever disconnect

Availability

- Clear zinc finish
- Available in even lengths 12"-28"



Authorized Distributor

To request samples and/or quotes, please email releases@dbroberts.com, or call us at 800-773-5388.



Accuride

12311 Shoemaker Avenue
Santa Fe Springs, CA 90670
(562) 903-0200
(562) 903-0208 Fax
www.accuride.com

Follow us

